

HOME

Sense of Calm

*Beautiful homes and spaces that let the
world slow down.*



— Hit Refresh —

Designer Stays, Inspired Renovations and Homes We Love



Dun Aluinn

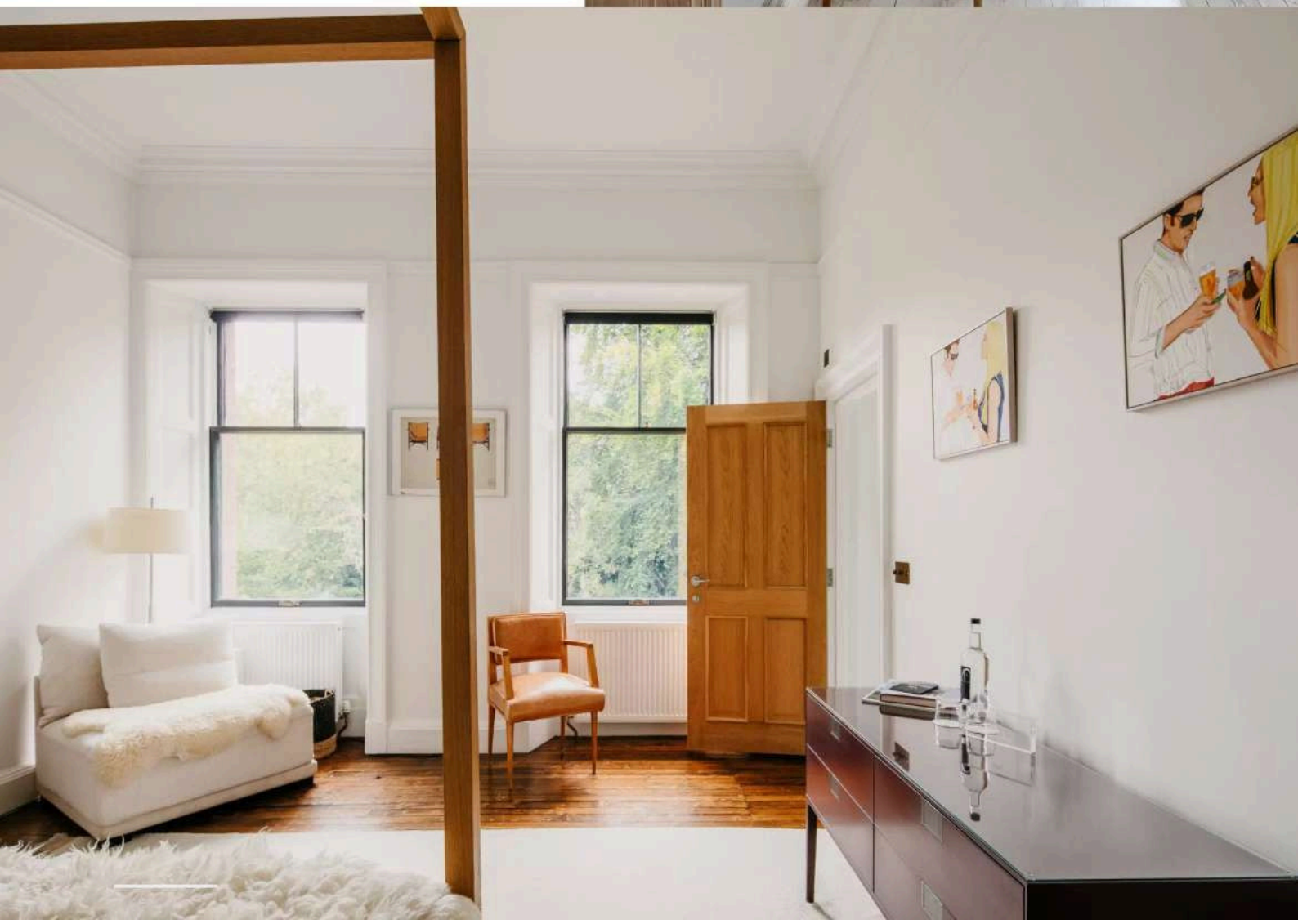
Perched above Aberfeldy with sweeping views across the Tay Valley, Dun Aluinn is entering a new era, opening its once exclusive retreat to individual travellers seeking a truly special Scottish Highland escape.



design hotel

Set high above the market town of Aberfeldy, Dun Aluinn has long been known as the kind of place reserved for milestone moments, private celebrations and deeply personal escapes. For years, this Perthshire retreat has operated as an exclusive-use hideaway, offering guests the rare luxury of having the entire estate to themselves. Now, that story is shifting in a way that feels both exciting and fitting. From April, Dun Aluinn enters a new chapter, opening its doors to individual bookings while still retaining the option for full private hire.

It is a move that makes this remarkable address more accessible without losing the sense of privacy and occasion that has always defined it. Independent travellers can now experience the estate's cinematic setting, refined interiors and warm Highland hospitality for themselves, rather than needing to gather a full house to do so. That change feels significant, because Dun Aluinn is not just another country stay. It is the kind of property that leaves an impression long after you have gone, a place where the landscape, the house and the atmosphere all work together in quiet harmony.



The setting is, of course, a major part of the appeal. Perched on an elevated site above Aberfeldy and the River Tay, Dun Aluinn sits within 5.5 acres of private grounds, wrapped in the kind of scenery that makes you instantly slow down. From the sweeping terrace, the views stretch across the Tay Valley towards Schiehallion, one of Scotland's most recognisable mountains. It is the sort of outlook that changes with the light, the weather and the season, offering something different each time you look up.

Those views continue to shape the experience beyond the main house too. Hidden among the trees sits a wood-fired cedar hot tub, tucked away in the woods for a more secluded moment of calm. It is exactly the kind of detail that gives Dun Aluinn its sense of escapism, balancing grandeur with intimacy. Whether you are visiting for a romantic weekend, a solo reset or a longer Highland stay, there is a strong sense here of being held by the landscape.

Inside, the house has been beautifully renovated, with nine individually designed bedrooms that together can sleep up to eighteen guests when booked exclusively. Each room has its own character, rather than following a standard hotel formula, and that sense of individuality gives the stay a more personal feel. Ensuite bathrooms, Egyptian cotton bed linen, plush towels and London & Avalon bathrobes all add to the comfort, while a handful of more distinctive touches elevate the experience further. Two rooms feature freestanding bathtubs, including a striking Japanese soaking tub, while another has its own steam room.

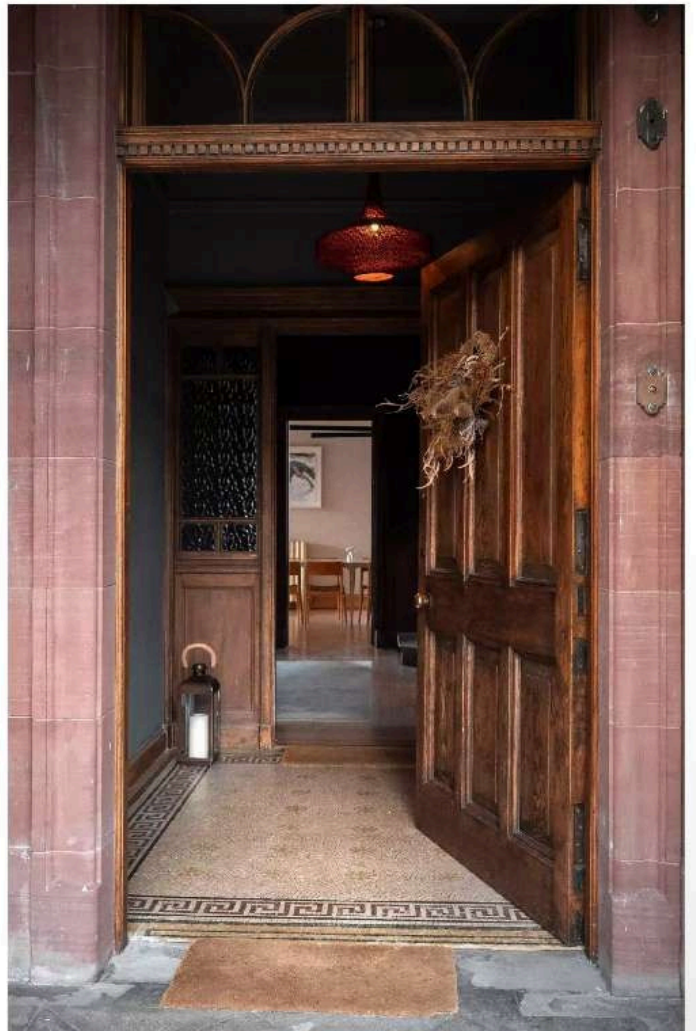
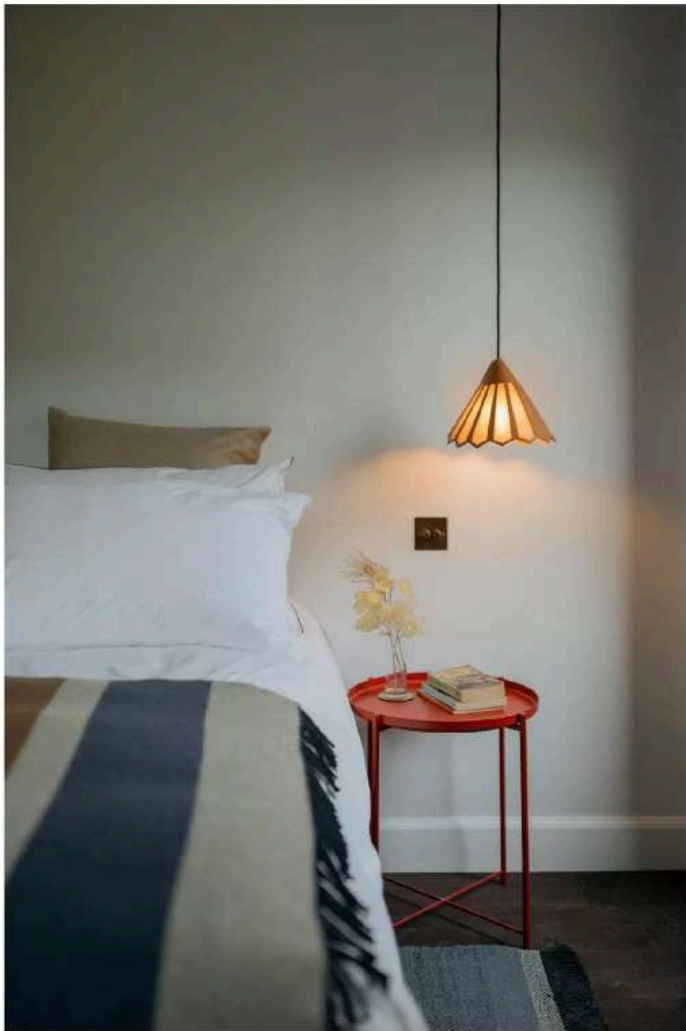
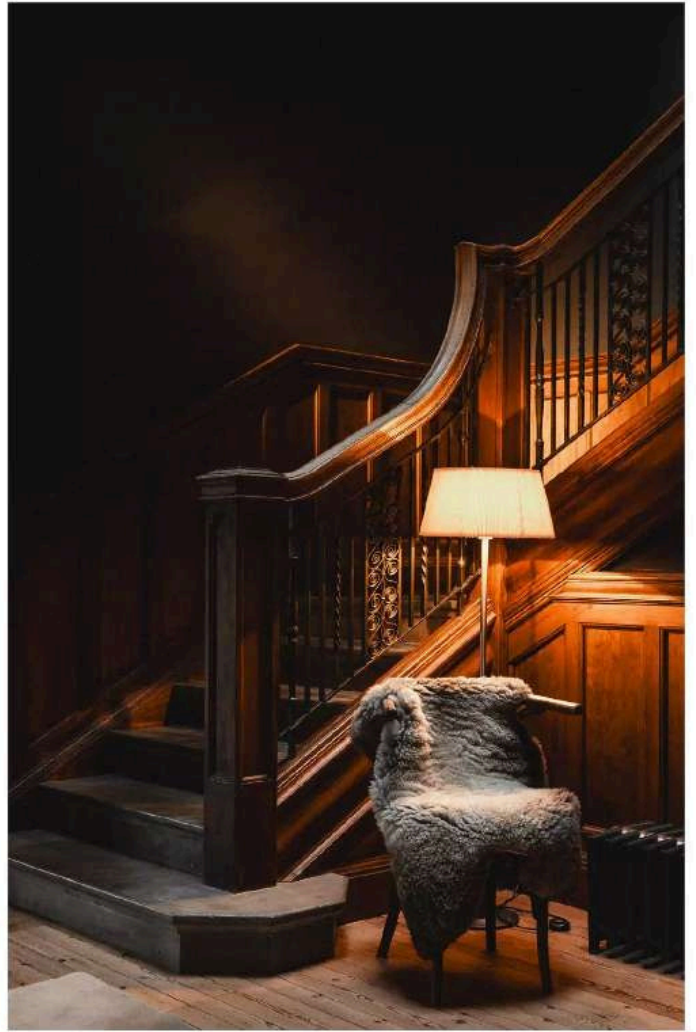


That attention to detail makes Dun Aluinn feel thoughtful rather than showy. It is luxurious, certainly, but in a way that still feels connected to its setting. Nothing appears overdone. Instead, the design encourages guests to settle in, exhale and appreciate the slower pleasures of a Highland escape, from long mornings with a view to quiet evenings by the fire. The individuality of the bedrooms only strengthens that feeling, giving each stay a sense of discovery.

Beyond the estate itself, the surrounding region offers everything one might hope for from a Scottish getaway. This is a landscape of rugged mountains, ancient glens and serene lochs, where every drive seems to lead to another picture-perfect view. Walks through the Highlands bring with them stories of clans, castles and old traditions, while Aberfeldy offers its own lively charm as a market town. Days can be spent hiking, exploring and tasting your way through Perthshire, before returning to the comfort of the house as the evening draws in.

Food is another part of the Dun Aluinn experience that feels deeply rooted in place. Menus are shaped by the rhythm of the seasons and the particular microclimate of Perthshire, with each dish designed around what is naturally abundant and at its best. That elegant seasonal approach runs through everything, from laid-back barbecues to the signature five-course Taste of the Highlands experience. It adds another layer to the stay, one that connects guests not just to the scenery, but to the region's produce, traditions and sense of occasion. With individual bookings now available, Dun Aluinn feels poised to become one of the most compelling ways to experience this corner of Scotland, still exclusive in spirit, but newly open to those seeking something truly special. *H*







'That attention to detail makes Dun Aluinn feel thoughtful rather than showy. It is luxurious, certainly, but in a way that still feels connected to its setting.'

Beyond the estate itself, the surrounding region offers everything one might hope for from a Scottish getaway. This is a landscape of rugged mountains, ancient glens and serene lochs, where every drive seems to lead to another picture-perfect view'.





About Perthshire

Perthshire is one of those parts of Scotland that seems to gather everything people imagine the Highlands to be into one striking region. There are rolling hills, ancient forests, clear rivers, dramatic mountain views and handsome towns that feel both lively and steeped in history. Aberfeldy, with its position on the River Tay, makes an especially appealing base, offering a mix of local charm and easy access to some of the area's most beautiful scenery. It is a place where mornings can begin with mist sitting low over the valley and end with a fireside whisky after a day spent exploring.

What makes the region so memorable is the balance it strikes between wilderness and warmth. One moment you are driving through vast open landscapes or walking through quiet glens, and the next you are stopping in a cosy pub, discovering a historic castle or sampling local produce shaped by Perthshire's rich natural surroundings. From scenic hikes and river walks to traditional villages and seasonal food experiences, the area has a depth that goes beyond its postcard beauty. It feels immersive, restorative and unmistakably Scottish in all the right ways.

dunaluinn.com

